

Redwell Art Edition



Sample pictures

Technical Data

- Surface:** Sheet steel, printed, frameless
- Heating element:** Partial storage heater
- Voltage:** 230 Volt, 50 Hz
- Electromagnetic tolerance:** Low emission
- Protection:** IP 40 (power plug)
IP 65 (installation)
- Installation:** Hidden brackets for wall installation
- Warranty:** 90 months

Certificates:



Model	Wattage	Weight	Size
WE350	350 W	approx. 7 kg	606 x 506 x 18 mm
WE800	830 W	approx. 16 kg	1606 x 426 x 18 mm
WE900	890 W	approx. 20 kg	1206 x 706 x 18 mm
WE910	910 W	approx. 19 kg	926 x 926 x 18 mm
WE1100	1100 W	approx. 21 kg	1606 x 606 x 18 mm
WE1400	1400 W	approx. 38 kg	2006 x 806 x 18 mm

Redwell Art Edition by Michael Ferner

His topic is life.

You can get one of Michael Ferner's exclusive pictures combined with energy-saving Redwell heating. Every picture is a limited edition of just fifty pieces in each panel size.



Picture examples:

Coffee break



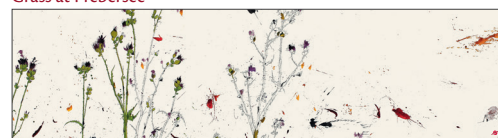
WE800
WE1100
WE1400

Lotus pond



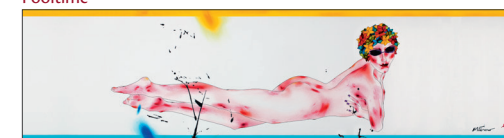
WE800
WE1100
WE1400

Grass at Prebersee



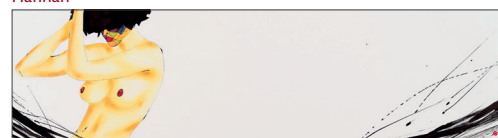
WE800
WE1100
WE1400

Pooltime



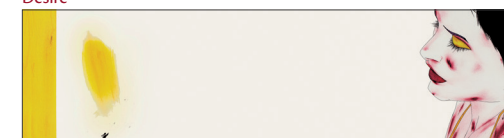
WE800
WE1100
WE1400

Hannah



WE800
WE1100
WE1400

Desire



WE800
WE1100
WE1400